

GLASS LINED STEEL RESERVOIRS



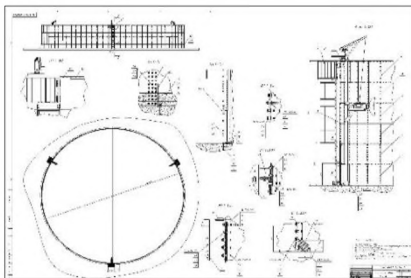
CJSC "Zavod Santeks" is a Belarussian enterprise with 10year experience in industrial production in the field of metal processing and glass-coating (enameling)

Plant territory: 15000M²

Machinery facilities: more 120 machines and equipment

Number of employees: 200 people

CJSC "Zavod Santeks" offers a full range of design, manufacturing and installation of glass-coated tanks.



Mounted reservoirs

Fire tanks
(Russian Federation)



Silos tanks
(Republic of Belarus)



The volume of the GLS-tanks available from 5 to 30000 m³

The advantages of GLS tanks

- quick installation (reinstallation) and removal at any time of the year;
 - no need for cranes or other large equipment for construction;
 - minimize lost construction days associated with weather delays;
 - possibility of producing reservoirs in accordance with technical requirements of the Customer;
 - an esthetic appearance;
 - no welded joints (used bolting);
 - high corrosion resistance;
 - NEVER NEEDS PAINTING;
 - service life up to 50 years, the warranty period from 5 to 15 years;
 - remove graffiti easily;
 - lowest life cycle cost;
-

Panels coating technology

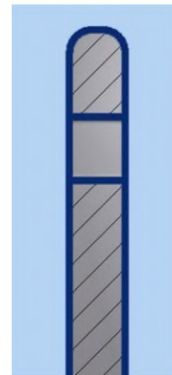
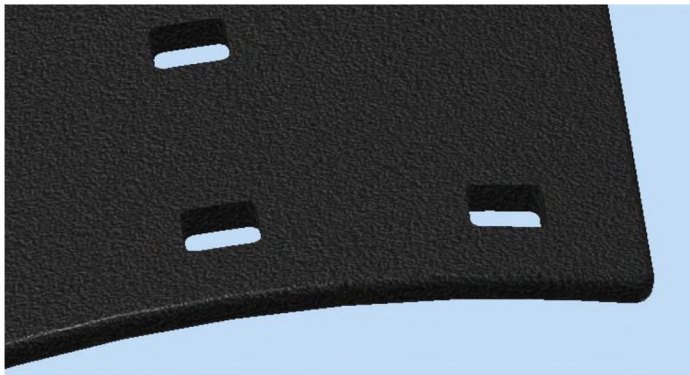
The enamel powder is applied onto the steel sheets by electrostatic charging. The charging of the enamel powder is done by ion atmospheric components which are formed by a corona discharge at the tip of a spray pistol.

The enamel parts move preferably along the electric field lines to the panel.

After that, the panel with the applied powder comes into the enameling oven.

The enamel powder melts with the steel at about 840 C to a strong and permanent fusion.

We have the possibility to round the edges before enameling to prevent damage from improper installation. This ensures also that the edges are better surrounded by the enamel.

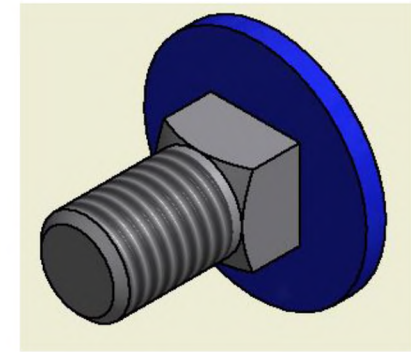
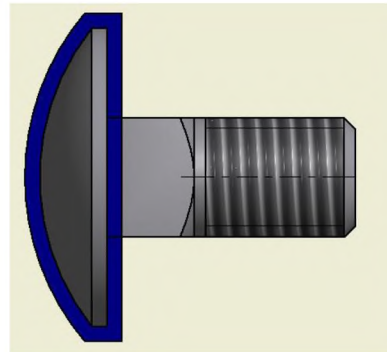


The view of panel after the process of glass-coating
Steel panel is fully protected from the contact with stored materials and external influences

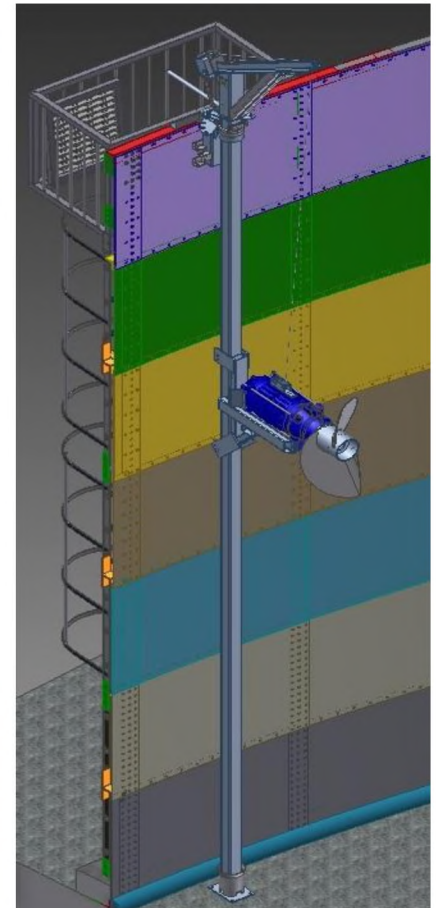
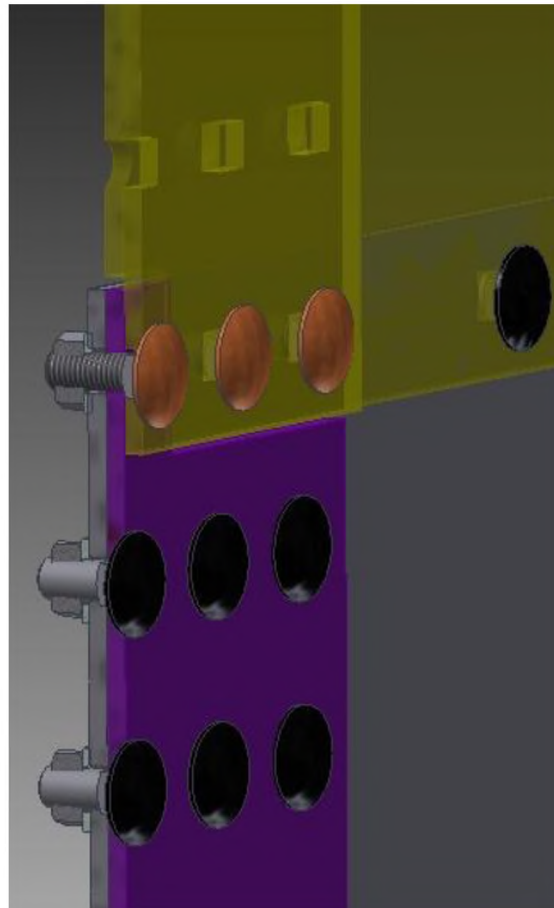
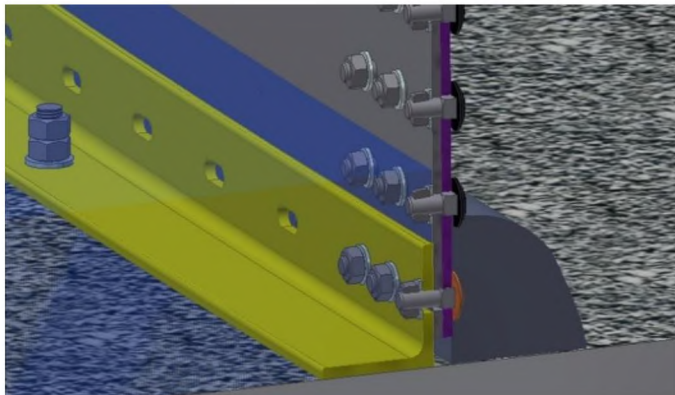
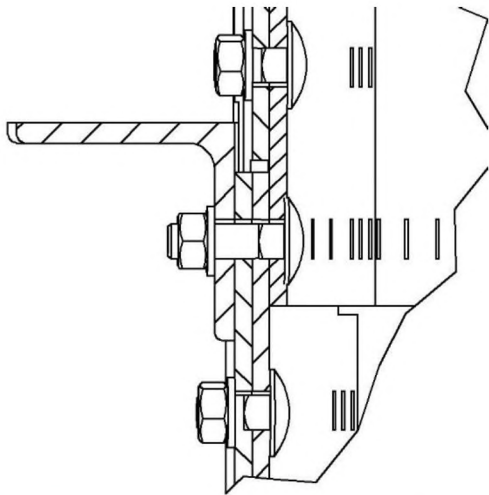
Panels assembling technology

Glass lined steel panels panel
Thickness: 4/5/6/7/8/10/12 mm
Steel type: special enamel able,
Steel 65G , DD14, St3
Method: hot rolled

Panel bolts: Hot-dip galvanized with plastic head
Dimension: M 12
Strength category: 8.8
Nut, washer: Hot-dip galvanized
Nut cap: optional (in plastic)



Panels connection diagram

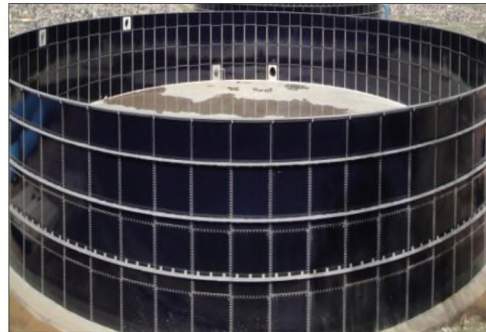


The general ways of GLS tanks application

- Liquid manure



- Potable water



- Fish farming



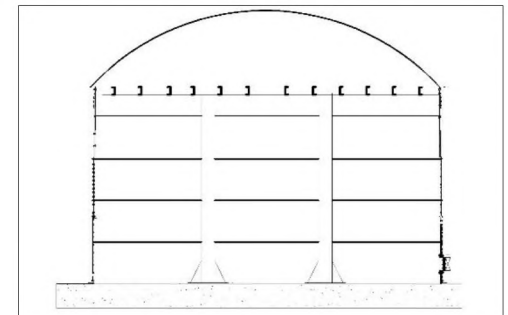
- Fire tanks



- Wastewater treatment systems

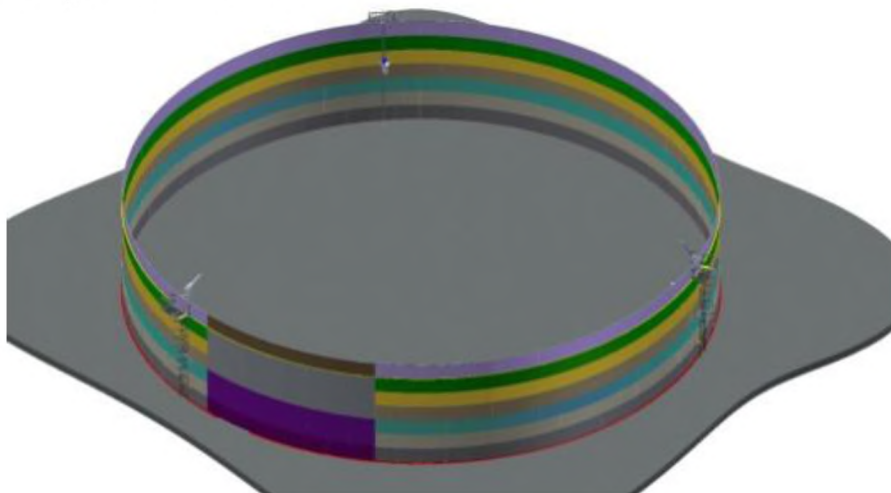


- Biogas PROJECT

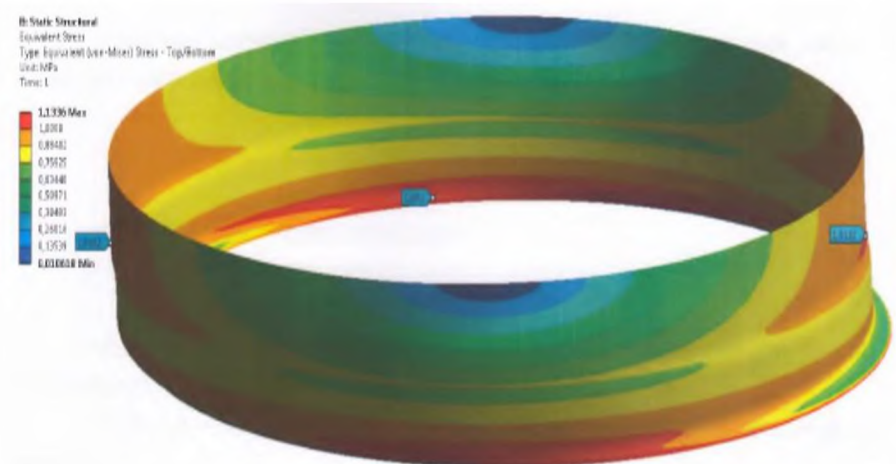


Tanks production stages

1. Creating a full 3d model of a tank, according to Customers technical requirements



2. FEM Calculation with snow, wind, rust and internal liquid loads



Tanks production stages

3. Delivery of high-quality rolled steel



4. Laser line cutting with TRUMPF TRUMATIC L 3030. This line allows precision cutting up to 10 microns



5. Pickling and passivation panels



Tanks production stages

6. Covering by chemically resistant glass-coating produced by FERRO (Holland), heating to temperature more than 870°C.

7. Quality control, inspection and packaging.



Tank installation steps

1. Preparation of the concrete base of the tank



2. Installation of the base corner of the first tier



Steps for installing tanks.

3.1. The assembly of the first tier and the formation of reinforced concrete belt



3.2. Assembling the next tiers with the installation of stairs



CJSC "Zavod Santeks" offers full cycle of design, manufacture, installation and warranty of glass-coated tanks

Contact information:

Yagor Nikitsin

www.santex.com

zakazsantex@gmail.com

mobile: +375-29-6766359

Presentation

The device stops wheeled vehicles UOKT.013000

Manufacturer: CJSC "Plant Santeks"



CJSC "Plant Santeks" is stopping device manufacturer wheeled transport UOKT.013000, which has no analogues. The basis of design incorporated high-strength structural steel, used many years of experience in the construction machinery and equipment.

It is intended to prevent the unauthorized entry of vehicles into the territory of objects by forced stopping of wheeled vehicles.

Overall dimensions of devices

Name indicator	Value for execution	
	UOKT (UOKT-1)	UOKT-2 (UOKT-3)
1 The height of the device in the folded closed position above the road surface, mm	108 \pm 5	15 \pm 5
2 The height of the device in the folded closed position, mm	108 \pm 5	108 \pm 5
3 Platform height above the road surface, mm	525 \pm 15	432 \pm 15
4 Width of the device mm	864 \pm 5	864 \pm 5
5 The length of the device, mm	1986 \pm 35	1680 \pm 30
6 Dimensions of the main control unit, mm,		
- height,	620 \pm 3	620 \pm 3
-depth,	380 \pm 3	380 \pm 3
-width	500 \pm 3	500 \pm 3

8 Dimensions of remote control panel, mm,		
- height	90 \pm 3	90 \pm 3
- length	180 \pm 3	180 \pm 3
- width	75 \pm 3	75 \pm 3

Main factors

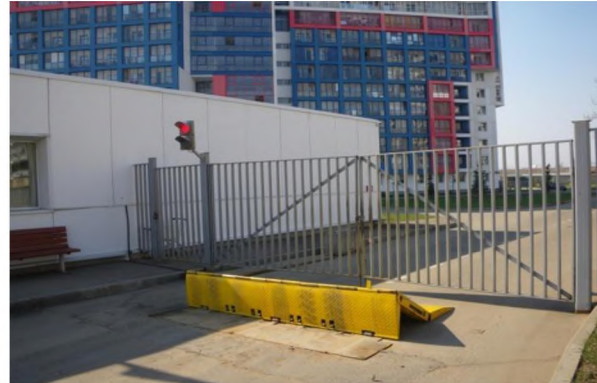
The main technical parameters	UOKT
Lifting / lowering time, seconds	4-5
Place of installation of the power unit (hydraulic station)	On the remote device protected by distance (recommended to install at the checkpoint post)
Placing the power unit	Protective cabinet
Supply voltage:	220 V
Operating voltage, redundant power supplies.	12 V, battery 100Ah
Operating temperature range	от -45°C до +40°C
Using the emergency operation if there is no power on the network, the use of a redundant power supply.	from the backup battery
Using the emergency operation in the absence of power, the rise / lowering manually, time in seconds.	with a manual hydraulic pump with remote protected PPC place.
Security	Intended to stop wheeled vehicles common with a maximum mass of at least 20 m., At speeds of at least 60 km / h.
Clearance	Height in lowered position on the level of the roadway -. 15 to 108mm, is designed for the passage of all types of cars and trucks of all brands
Service	Routine maintenance of the bollard with hydraulic drive, is an annual oil change and twice a year lubricated hinge groups

Application area

The devices are designed for physical protection of facilities, can also be used in automated systems for the protection of.

1. Regime Institutions

2. Objects requiring increased security



The principle of operation of the device

The device is in operation (combat) position of two hydraulic cylinders. When lifting the front edge of the platform, there is a simultaneous displacement of the movable ramp in a vertical plane after the last entry constitutes "force barrier" into engagement with the hooks. The impact of the force barrier to moving vehicle, leading to a complete stop and the destruction of the latter.

The automation system provides the following functions:

- Switch to automatic mode with the main power supply to the backup when the main power supply,
- Platform lift is a single press of "raise (UP)" button,
- Lowering of the platform is carried out with a single press "delete" button, I am green and ignition green indicator on the control panel,
- Operation of the device is accompanied by a warning beep,

- With lowered platform lights lit in green mode, with a raised platform, the traffic light is lit in red mode,
 - Automatic control of the level of battery charge, constantly keeping it in a charged state.
- the mobile platform is controlled from the main panel of the control unit and remote panel. It is possible to lock out remote panel. Lock button remote control panel is located on the main control unit.
- The emergency stop device is performed by pressing the "STOP", located on the main control box and remote control panel.

Full-scale tests

1.



2.

